

In Focus

Tri-State Photographic Society

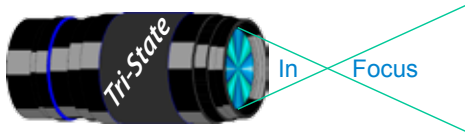
Volume 22

Issue #6

September/October 2015



**Colorful Tree Lined Lane**  
**by Donna Loughry**  
**Canon 60D, 18-270 lens, ISO 400, 1/250s, f/9.5.**



## The Fall Color Season

This is my favorite time of the year. It is the season in which the leaves all turn into bright, non-green colors. In New England the locals call those who like to see the fall colors “leaf peepers.” From the way they say it, this is not considered a nice term. However, I will gladly accept the phrase as a badge of honor.

In preparation for the fall color season, I read magazines and listen to what others say to remember. What follows is a list of things to remember to which I have added my own reminders.

### Fall Color Photographic Tips

Take a moment to relax and savor the scene in front of you.

Consider the fog or overcast skies as your friend – it makes colors pop & glow.

Be prepared for a little rain/dampness in these conditions.

Spend time with each scene and consider the following:

Use a tripod to reduce camera movement.

Shallow DOF →→→ Large DOF.

Remember closeups as well as scenics.

Try closeups with wide angle or telephoto (wide) - Get low and go wide with a wide angle lens.

Use ISO 100 if sunny/ISO 400-800 if overcast.

Watch sharpness - Maintain focus.

Use long lenses to isolate color.

Use ND Filters for a dramatic sky

Use polarizer - especially with water or other reflective surfaces.

Use largest F-stop (f16+), AV priority.

Focus 1/3 into the frame for the widest focus range.

Use exposure compensation & bracket  $\pm 1$  &/ or  $\pm 2$  (especially if the light changes quickly).

Move camera up or down etc. after focusing w/long exposure for abstracts.

Look for reflections in water & use long exposures for ethereal waterscapes - on a tripod.

Backlight for foliage that pops.

Look for side lighting for texture.

Remember the golden hours either side of sunset/rise.

Take lots of shots!

### Composition

Include a focal point that is interesting.

Omit all but the subject of your photograph.

Watch for leading lines & composition.

Consider rule of thirds but be willing to break it.

Make room for later cropping.

Consider Black & White.

Use Sun as a star.

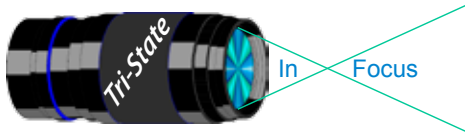
Above all - Enjoy it!

Do I remember all of this every time? Heavens no! That is why I refer to this list frequently while I am out and about.

If you have any additional things that you tell yourself to remember and want to share, please pass them on to me.

*Donna*





## How to Prepare An Image For Pdi Display.

Many people have asked over and over again “How do I make my image ready for PDI competition?” This is a description of how I do it which seems to be successful for me.

We all have our favorite way of processing our images - from shooting jpegs to shooting in raw files and making some adjustments ourselves. Note that, *if the image you took is bad, no amount of making adjustments will fix it.* That said, when we display an image, the amount of light, color & contrast falls off depending on the distance between the projector and the wall due to the light scatter in the air amongst other issues. Figure the distance between the projector and the wall, is about 10-15 feet.

On my computer with it's monitor, I prepare my image to my satisfaction. Everyone has their own way of preparing/correcting/editing their images with their favorite software. You can adjust these steps to fit the software you use. Note: Step 4 is an optional step that I use for my computer. The rest of the steps are pretty general.

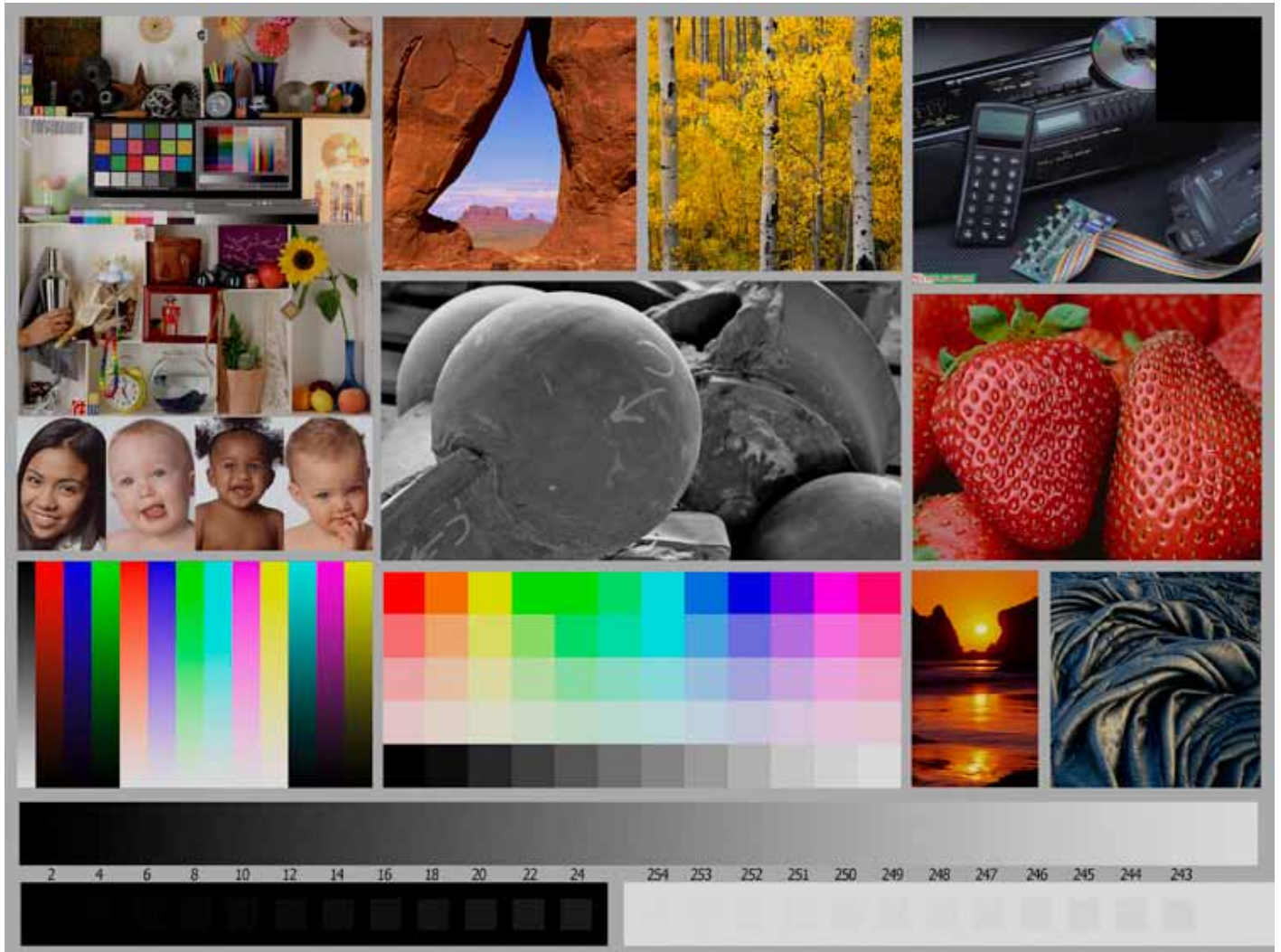
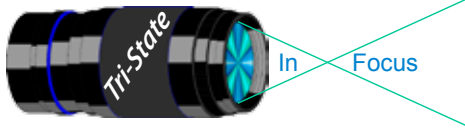
- 1) **Backup.** Save the image as a PSD file at full size so you can redo the entry file as needed.
- 2) Because I use layers in processing my image, I flatten the image and make sure that it still looks good.
- 3) **Resize the image.** In *Photoshop*
  1. (image/image size), in “pixel dimensions”
  2. set the longest side to 750 pixels.
  3. The shorter size should automatically adjust to less than 750 pixels.In *Photoshop Elements*:
  1. Open the image to be re-sized
  2. Image>Resize>Image Size
  3. A box will open - The top two boxes will show the image size in pixels.
  4. Change the largest size to 750.
  5. If the Resample box is checked at the bottom all other adjustments will automatically adjust.
  - \* Review the image to make sure it looks good

- 4) (*My optional step*) This next step may or may not need to be done with your image. But, I have found with my computer that if what is on my screen is already dark I may not need to do anything. Otherwise, I darken a light image by using a gamma setting of about .90. This is not much of a change but it has kept my images from looking dull and lifeless when projected.
- 5) **Save as a JPG.** I save the image file as a JPG file with baseline “standard” and a quality of 12 (maximum – least amount of JPG compression). JPG files are compressed by nature – you want the least amount.
  - \* Remember - you can only open and save a Jpeg file 6 times before you notice pixelation and degradation of image quality.
  - \* For the best display, I avoid opening and saving the Jpeg file after this point. If I need to make a correction at this point, I go back to my pre-jpg file to make the correction and then resave it as a jpg.
  - \* Yes, the JPG is significantly smaller than your original file. But it is the correct size for sending to Jerry Fritsch for your competition entry.
- 6) **Review your image at 100%.** Photoshop Hint: Double click the magnifying glass in the tool bar to get 100% magnification. This is what will be displayed.

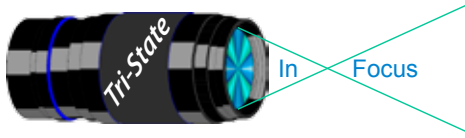
After following this procedure, you have a file that should be ready for PDI display. Send it as an attachment with title to [tristatepdi@yahoo.com](mailto:tristatepdi@yahoo.com) by Thursday Midnight before the Friday meeting. (*Note you can send attachments to this e-mail but not the Listserv.*)

I hope this helps everyone with the process. If you have any questions, feel free to ask. *Donna*

*Thanks for Bob Ihrig for the Photoshop Elements instructions.*



This is the image used to calibrate the Projector for PDI images. *(Note - do not use this image in the newsletter as it has been enlarged and therefore degraded.)* The file of this image is located on our website at <http://www.tristatephotographicsociety.com/Documents/TristateProjector.jpg> Once the image is open, right click on the image and choose "save image as" to save to the directory/folder where you want to keep the image. For any other questions, see Jerry Fritsch or Bob Ihrig.



August Pictorial -  
Abstract or Almost - Informal

Slides - Accomplished

- |   |                  |               |
|---|------------------|---------------|
| 1 | Fritsch, Jerry   | Smok'In Color |
| 2 | Jones, Margaret  | Arches        |
| 3 | Jennings, Miriam | White On Blue |

PDI - Tyro

- |   |                |                         |
|---|----------------|-------------------------|
| 1 | McGill, Teresa | Sinking                 |
| 2 | Charette, Nee  | Luminous Manifestations |
| 3 | Beck, Ron      | Abstract Leaf           |

PDI - Accomplished

- |   |                  |                |
|---|------------------|----------------|
| 1 | Kraus, Mark      | Tulips On Fire |
| 2 | Carpenter, Jerry | Ring Of Fire   |
| 3 | Thompson, Dan    | Luminous Lines |
| 4 | Kubler, John     | Flow           |
| 5 | Haakenson, Bryan | Salt           |
| 6 | Charette, Nelson | Beloved Calm   |

Prints - Tyro

- |   |                   |                     |
|---|-------------------|---------------------|
| 1 | Denman, Ted       | Nature's Lines      |
| 2 | Sallee, Ramona    | Mechanical Innards  |
| 3 | Scheall, Ted      | Nature's Own Design |
| 4 | Whitehead, Melvin | In the Night Time   |

Prints - Accomplished

- |   |                |                          |
|---|----------------|--------------------------|
| 1 | Ihrig, Bob     | Black & White Abstract   |
| 1 | Jones, Richard | What Am I?               |
| 1 | Sallee, Joy    | Geothermal Energy Source |
| 4 | McBreen, Jane  | I Bleed Blue             |
| 5 | Deering, John  | A Touch Of Pink          |
| 5 | Loughry, Donna | Kelora Flower Abstract   |
| 7 | Deering, Ann   | Abstraction In Color     |

August Nature -  
Moving Water - Informal

Slides - Accomplished

- |   |                  |                         |
|---|------------------|-------------------------|
| 1 | Fritsch, Jerry   | Cedar Falls             |
| 1 | Jones, Margaret  | North Clear Creek Falls |
| 3 | Jennings, Miriam | Bob's Green Rocks       |
| 4 | Jones, Richard   | Rough Surf              |
| 5 | Deering, Ann     | Cumberland Falls        |

PDI - Tyro

- |   |               |                      |
|---|---------------|----------------------|
| 1 | Charette, Nee | Lower Cataract Falls |
| 2 | Beck, Ron     | Big South Fork River |

PDI - Accomplished

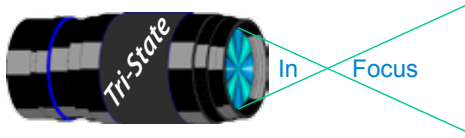
- |   |                  |                                 |
|---|------------------|---------------------------------|
| 1 | Carpenter, Jerry | Wave Action                     |
| 2 | Haakenson, Bryan | Elakala Falls                   |
| 3 | Kubler, John     | Spring Water                    |
| 4 | Thompson, Dan    | Rapids At Sunset                |
| 5 | Kraus, Mark      | Down Pour                       |
| 6 | Charette, Nelson | Cataract Falls In Black & White |
| 7 | Ginn, Roger      | Washington Stream               |

Prints - Tyro

- |   |             |                |
|---|-------------|----------------|
| 1 | Denman, Ted | Erupting Water |
|---|-------------|----------------|

Prints - Accomplished

- |   |                |                       |
|---|----------------|-----------------------|
| 1 | Sallee, Joy    | Crashing Waves        |
| 2 | Ihrig, Bob     | Colorful Cascade      |
| 3 | Deering, John  | Waiting For Tarzan    |
| 4 | Loughry, Donna | Rushing Past the Rock |
| 5 | McBreen, Jane  | Rushing Water         |



September Pictorial -  
Open - Informal

Slides - Accomplished

- |   |                  |                          |
|---|------------------|--------------------------|
| 1 | Fritsch, Jerry   | Maurice Inspired         |
| 2 | Jones, Richard   | Tussock Moth Caterpillar |
| 3 | Jennings, Miriam | Spring At Krohn          |

PDI - Tyro

- |   |               |                  |
|---|---------------|------------------|
| 1 | Charette, Nee | Joyful Old House |
|---|---------------|------------------|

PDI - Accomplished

- |   |                  |                         |
|---|------------------|-------------------------|
| 1 | Thompson, Dan    | Summer Fireworks 2015   |
| 2 | Charette, Nelson | Mount Storm Park        |
| 3 | Haakenson, Bryan | Dead Horse Pass Sunrise |
| 4 | Ginn, Roger      | Peaceful Trail          |
| 5 | Carpenter, Jerry | What a Swing!           |

Prints - Tyro

- |   |               |                                    |
|---|---------------|------------------------------------|
| 1 | Scheall, Ted  | Inside the Observatory             |
| 2 | Denman, Ted   | Spotted Knapweed                   |
| 3 | Hathorn, Lisa | Man Has Plans,<br>Nature Disagrees |

Prints - Accomplished

- |   |                 |                   |
|---|-----------------|-------------------|
| 1 | Kraus, Mark     | Garden Angel      |
| 2 | Sallee, Joy     | All Puffed Up     |
| 3 | Jones, Margaret | Sunset            |
| 4 | Kubler, John    | The Bouquet       |
| 5 | Loughry, Donna  | Veggie Basket     |
| 6 | Deering, John   | All Alone         |
| 7 | Ihrig, Bob      | Solarized Caboose |

September Nature -  
Open - Formal

Slides - Accomplished

- |   |                  |                  |
|---|------------------|------------------|
| 1 | Fritsch, Jerry   | Ringer           |
| 2 | Jennings, Miriam | French #3        |
| 3 | Jones, Margaret  | Purple Gallinule |

PDI - Tyro

- |   |               |               |
|---|---------------|---------------|
| 1 | Beck, Ron     | Getting Lunch |
| 2 | Charette, Nee | Yellow Leaves |

PDI - Accomplished

- |   |                  |                      |
|---|------------------|----------------------|
| 1 | Carpenter, Jerry | Stop Pushing Me!     |
| 2 | Kraus, Mark      | Cabbage White        |
| 3 | Haakenson, Bryan | Pewit's Nest         |
| 4 | Ihrig, Bob       | Perching Hummingbird |
| 5 | Thompson, Dan    | Blue Lotus Close-up  |

Prints - Tyro

- |   |               |                          |
|---|---------------|--------------------------|
| 1 | Denman, Ted   | American Yellow Lotus    |
| 2 | Hathorn, Lisa | Miss Violet              |
| 2 | Scheall, Ted  | Zebra Longwing Butterfly |

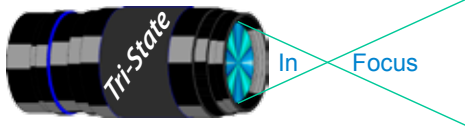
Prints - Accomplished

- |   |                |                               |
|---|----------------|-------------------------------|
| 1 | Jones, Richard | Black Swallowtail Caterpillar |
| 2 | Kubler, John   | Mesa Arch                     |
| 3 | Loughry, Donna | Frog On a Log                 |
| 4 | McBreen, Jane  | Out For a Swim                |

B/W Prints - Accomplished

- |   |                  |                            |
|---|------------------|----------------------------|
| 1 | Voelker, Dale    | Ice Fields Parkway, Canada |
| 2 | Charette, Nelson | Polar Bear                 |





## TRISTATE PHOTOGRAPHIC SOCIETY COMPETITION CATEGORIES - 2015

Pictorial (1st Meeting)	Month	Nature (2nd Meeting)
Open	January	Landscape of a season
Bridges	February	Open
Open	March	SkyScape/Cloudscape
Urban/City Landscape	April	Animals with Fur
Open	May	Open
American Pioneer	June	Open
Open	July	Flower(s)
Abstract or almost	August	Moving Water
Open	September	Open
Urban Wildlife	October	Open
Open	November	Trees
Wheels	December	Open

### *Reminder:*

*Limit 1 print for Competitions.*

*A Formal print is Matted only - no Frames  
and no thicker than 1/4 inch.*

*An informal print must be no thicker than 1/8th of an inch.*

*Additional print(s) will be for Display and Discussion.*

### For PDI (Projected Digital Image)

If you would like to participate in the Projected Digital Images competitions you can email them to [tristatepdi@yahoo.com](mailto:tristatepdi@yahoo.com) up through the Thursday Midnight before each Friday meeting. They should be JPEG format (.JPG file type) with the longest side having 750 pixels or less.

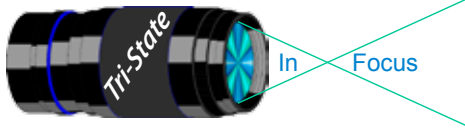
You can re-size the images in your digital processing software, usually under Image, then Image Size. Change the scale to pixels (not inches or cm), and modify the longest side (height or width)

to 750. The other dimension should automatically adjust.

If you don't know how to adjust the size, or can't, feel free to email the image to [tristatepdi@yahoo.com](mailto:tristatepdi@yahoo.com). The size of image will be adjusted. For best color results, your JPEG image should also use a sRGB color profile.

Please include your name, the image title, and if you are competing in Tyro or Advanced categories in the e-mail.

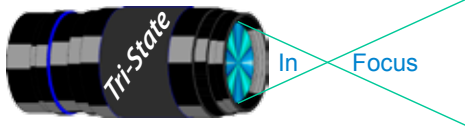
The file used to Calibrate the Projector for PDI images is located on our website at <http://www.tristatephotographicsociety.com/Documents/TristateProjector.jpg> Once the image is open, right click on the image and choose "save image as" to save to the directory/folder where you want to keep the image.



## Topics for 2015 with Descriptions

Topic		Category	Guidelines/Suggestions
Landscape of a season	January	Nature	Image illustrating a season (Spring, Summer, Fall, Winter.)
Bridges	February	Pictorial	Whole or part of a bridge(s) of any size, shape, use or condition.
SkyScape/Cloudscape	March	Nature	Just the sky, including but not limited to Sun, Moon, Clouds and/or Stars or other atmospheric conditions or elements with minimal other Nature objects in the frame. Example: Sunset Illuminated Clouds with a very few tree branches on an edge just to anchor the image.
Animals with Fur	April	Nature	Non-Domesticated animals with fur that is of any color, length or type. Definition of fur: fine, soft hair on an animal. May be course or fine, of any color and of any length. This does not include Feathers or Scales.
Urban/City Landscape	April	Pictorial	A scene which includes but is not limited to traffic, clustered housing, street games, people gathered on the street corners, waiting to cross the street, day or night or anything in between or any season.
American Pioneer	June	Pictorial	Depiction of people and life styles of times past in America. This would include but is not limited to living history exhibits or museums showing settlers, farmers, ranchers--their homes, ways of life, and activities.
Flower(s)	July	Nature	Any Single or Multiple, Non-Hybrid Flower(s) in a natural setting. Examples might be but are not limited to: a field of flowers or a flower(s) in the woods.
Moving Water	August	Nature	Including but not limited to Waterfalls, Streams, & Rivers.
Abstract or almost	August	Pictorial	An image of part of a subject so that it may not be obvious what the whole subject is. Definition of abstract photography: A photograph that does not attempt to represent external, recognizable reality but seeks to achieve its effect using shapes, forms, colors, and textures etc.
Urban Wildlife	October	Pictorial	Any non-domestic animal that might be found in a city or suburb. This could include but is not limited to: deer, squirrels, raccoons, Opossums, Coyotes, Insects, Lizards, birds such as pigeons, etc.
Trees	November	Nature	Whole or part of a tree(s) Including by not limited to bark, branches, leaves, flowers, seeds etc.
Wheels	December	Pictorial	Can be a wheel(s) (or gear(s)) of any kind. Definition of a wheel: a Circular frame or disk that revolves or can revolve around an axle or rod.





## October 2015 Meeting Dates:

Friday, Oct. 02, 2015 - Pictorial - 1st Friday  
Campbell County Extension Service Office.  
Time: 7:00 pm

Friday Oct. 16, 2015 - Nature - 3rd Friday  
Campbell County Extension Service Office.  
Time: 7:00 pm

## November 2015 Meeting Dates:

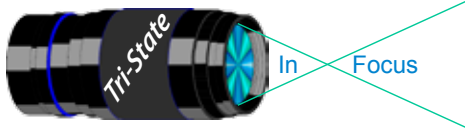
*Note date change of first meeting*

Friday, Nov. 13, 2015 - Pictorial - **2nd** Friday  
Campbell County Extension Service Office.  
Time: 7:00 pm

Friday Nov. 20, 2015 - Nature - 3rd Friday  
Campbell County Extension Service Office.  
Time: 7:00 pm

### *Editor's Note:*

*Deadline for the Next Issue is  
November 1, 2015.*



**Website:**

<http://www.tristatephotographicsociety.com/>

**Facebook:**

<https://www.facebook.com/tristatephotographic>

**PSA:**

<http://www.psa-photo.org/>

**E-mail Address Change Reminder.**

If you change your e-mail address there are lots of people to notify, and it is easy to forget someone who needs to know your new address.

Remember to let Bob Ihrig ( rdihrig@fuse.net ) know of any address change so he can update this on the ListServ. Please put "Tri-State" in the subject box.

**2015 Tri-State Officers & Chairpersons**

<b>President</b>	Donna Loughry	<b>Pictorial Slide Chairs</b>	Margaret Jones
<b>Vice-President</b>	Margaret Jones	<b>Slide Projector Operator</b>	Alt Mark Kraus
<b>Secretary</b>	John Kuhbler	<b>Print Chairs</b>	John Deering
<b>Treasurer</b>	Bryan Haakenson	<b>PDI Chair &amp; Equipment</b>	Alt - Dale Voelker
<b>Refreshments</b>	Teresa McGill	<b>PDI Pictorial</b>	Jane McBreen - Chair
<b>Banquet</b>	Teresa McGill & Wilda Everman	<b>PDI Nature</b>	Roger Ginn
<b>Equipment</b>	Jerry Carpenter (Chair)	<b>Newsletter</b>	Ron Beck
	Dale Voleker	<b>Website</b>	Ken Knipper
	Ron Beck	<b>Points/Awards</b>	Bob Ihrig
	Teresa McGill	<b>Programs</b>	Mark Kraus
<b>Location &amp; Setup</b>	Bob Ihrig	<b>Refreshment Supplies</b>	Bob Ihrig
<b>List-Serve Manager</b>	Bob Ihrig	<b>FaceBook Manager</b>	Donna Loughry
<b>Exhibits/Publicity</b>	Open	<b>PSA</b>	Donna Loughry
<b>Field Trips</b>	Joy Sallee		Margaret Jones
	Lisa Hathorn		Richard Jones
<b>Membership</b>	Jerry Carpenter		Lisa Hathorn
<b>Nature Slide Chair</b>	Margaret Jones		Nelson Charette
	Alt Mark Kraus		Joy Sallee - Club Rep. & PID
			Donna Loughry - Nature