



In

Focus

Tri-State Photographic Society

Volume 18

Issue #9

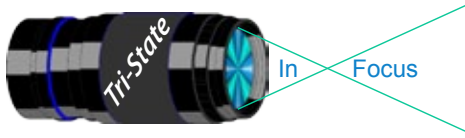
October 2011



**Sharon Woods Fire Trees**

**by Donna Loughry.**

**Canon XSI, 1/45, f5.6, ISO 200 - Time: 12.54 PM**



## On the Cover

### October!

In my book, October is my favorite time of year! The best time is early in the morning during the golden hour or so they say. As so many people have told me, time and time again, sometimes rules and/or guidelines are meant to be broken. This image was taken not during the golden hour but about 1:00PM in the *afternoon*. You would think the colors would have been washed out, but they were not. Why not? I think it had something to do with the clearing weather.

The record amounts of rainfall for the past year means we've had lots of storms and cloudy skies. Recently it has rained at least once a week for about 2-3 days. This means we've had 4-5 days out of seven with cloudy weather. How do I know this? I usually hike with the local Sierra Club group on Thursday mornings. We had rain to hike in on 4 out of 5 Thursdays during October. Wednesdays and Mondays were also just as bad. But the weekends were nice!

Weather watcher that I've become, I wanted the chance to get out and get some images of the trees in the beginning of the Fall color change under blue skies. Up to this point, the skies had been heavily overcast with imbedded rain showers for the previous two days. The day began with these same skies. About 11 AM, it started getting lighter and lighter and lighter along with my anticipation of getting out and about. At Noon I realized that the sun was out and there was not a cloud in the clear blue sky. Yippee!

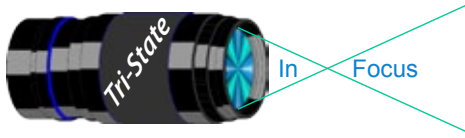
I dropped or postponed everything including the laundry, a newsletter (not TSPS) and the groceries. I grabbed my gear heading for the lake at Sharon Woods. The air was clear and still. There was a very soft breeze in the center of the lake that did not affect the water near the shore. This left the water near the shore very still. After spending about an hour and a half in this one area taking lots of shots, I headed home.

That evening while reviewing the shots from that afternoon, I was struck by the vibrancy of the colors. They were so strong that the reflections of some of the trees, with the ducks softly rippling water, made the trees look like they were on fire!

However, the colors also seemed over saturated when I printed a large copy of the image. Then I remembered something Bob Ihrig had said during one of our photo review sessions about saturation. Flowers and leaves can seem over saturated when you print them and you need to reduce the saturation. Therefore, I reduced the saturation and what you see is the picture on the front page. I think it is wonderful and shows the early colors of fall – exactly what I wanted!

It pays to listen to the photo reviews after our competitions! Thanks Bob!

*Donna*



---

## What is it?

### Is Upgrading Right For You?

A recent iPhone ad used the classic quote: “The best camera is the one you have with you.” Good to remember when you are about to get bombarded with the annual introduction of new and (of course) much better cameras from Nikon, Sony and all the rest. Overnight 16 and 24 Mega pixel sensors, new firmware, new processors and for Sony, the new OLED viewfinders, are once again setting new benchmarks. As always there is an army of bloggers who are creating long lists of “why didn’t Nikon put this button in another place or why not 24 Mp on this model instead of 16 Mp?”

If they were only as good photographers as list generators.

Of course the question we all have is: “Do I upgrade to the new model? If I am the happy owner of a Nikon D300 is the D400 going to help me take better pictures.

If I recently moved up to a full-frame D700, am I ready for the D800, and so forth.”

To talk myself into (or out of) upgrading from my D300, I did some test shots and prints with the 12 Mp D300 and the 14 Mp Sony NEX 5. Both with same focal length lens and ISO setting. Both in Jpeg and in RAW. Looking at the images in Lightroom on an Apple iMac 27” HD screen, the Sony shots appeared more crisp and the colors more natural. Prints of these images on an Epson

photo printer on Premium paper gave the same results. Was it all in the pixel count? I will suggest not! The technical image quality is impacted by several things:

The D300 firmware is reducing the sharpness slightly to reduce noise. Newer generation Nikon models like the D7000 are producing more crisp images (new processor/new tuning). To be fair, Sony’s processor and firmware are at least 3 years “younger”. In the fast pace of digital imaging, that is a long time.

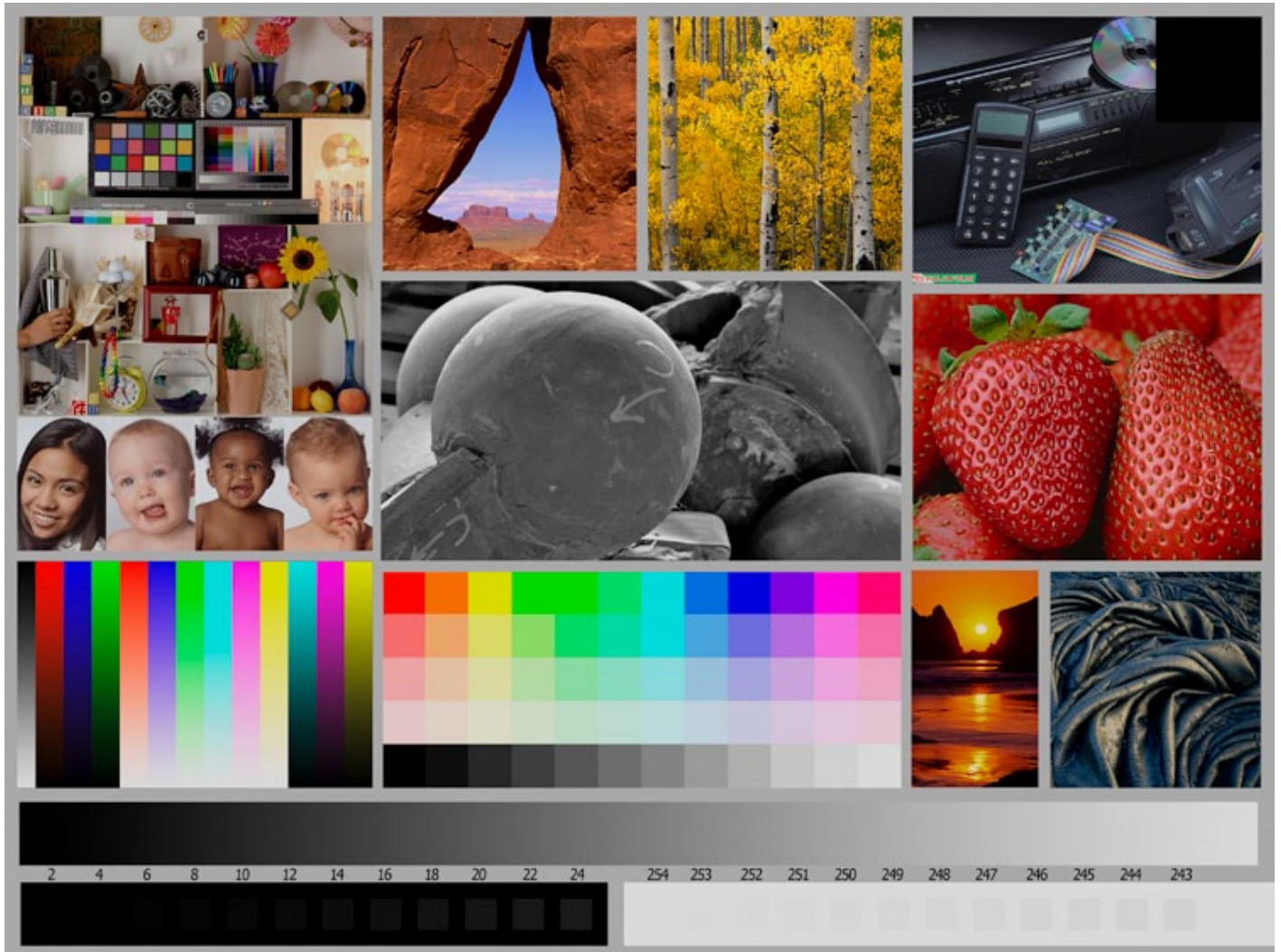
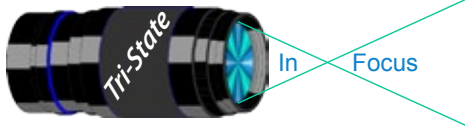
The lens quality is important too. I used a Nikon 35mm 1.8 lens on the D300, and a Sony 18-55 mm 3.5-5.6 lens on the NEX 5. Most people will argue that the Nikon lens should produce the best results, everything equal.

So have I talked myself into upgrading? Yes.

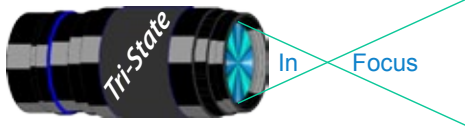
I want to take advantage of the new processors, the new firmware and the new sensors, knowing that whatever I buy now, the marketing folks at Nikon and Sony will try to convince me in 2-3 years that I need to change again.

And then I remembered that my “old” 6Mp FUJI camera took real sharp pics in great colors, so why do I continue upgrading? Maybe it’s like buying new golf clubs. You will do better with the new stuff!

*Mogens*



This is the image used to calibrate the Projector for PDI images. *(Note - do not use this image in the newsletter as it has been enlarged and therefore degraded.)* The file of this image is located on our website at <http://www.tristatephotographicsociety.com/Documents/TristateProjector.jpg> Once the image is open, right click on the image and choose "save image as" to save to the directory/folder where you want to keep the image. For any other questions, see Jerry Fritsch.



---

## Photographic Opportunities for the 2011

There are always lots of events going on in the Tri-State area. Many of these events can be excellent opportunities for photography.

Once again I will be looking up future events for the year 2011 for posting in this newsletter and on the website. If you know of additional events for 2011, please let me know so I can list them.

### Nature Photographers -

If you know of specific or general times and places to photograph migratory wildlife/birds etc. please share the specifics and I will post them here.

Please e-mail the information to [dloughry@fuse.net](mailto:dloughry@fuse.net).

*Donna*

---

### **Krohn Conservatory**

**(note may be closed on Mondays)**

Holiday Show in December

[www.cincyparks.com/krohn-conservatory/index.shtml](http://www.cincyparks.com/krohn-conservatory/index.shtml)

### **Cincinnati ZOO**

PNC Festival of Lights

Nov 25, 2010-Jan 1, 2012.

[www.cincinnati zoo.org](http://www.cincinnati zoo.org)

### **Newport Aquarium**

[www.newportaquarium.com](http://www.newportaquarium.com)

### **Balluminaria at Eden Park**

An Annual event usually held in November at Eden Park

---

### **Cincinnati Art Museum**

Open Tuesday through Sunday, 11 a.m. to 5 p.m.

Closed Mondays, Thanksgiving, Christmas, New Year's Eve, New Year's Day, Martin Luther King Jr. Day, Presidents Day, Memorial Day, Fourth of July, and Labor Day.

[www.cincinnatiartmuseum.org](http://www.cincinnatiartmuseum.org)

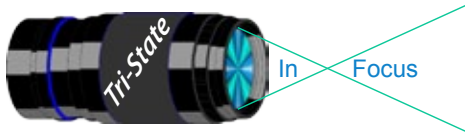
From their website:

#### **Photography**

You are welcome to photograph and videotape in the permanent collection galleries, but lights or tripods are not permitted. Photography of temporary exhibitions, works on loan, works created after 1978, or works by living artists is not permitted.

#### **Sketching and Copying**

You are welcome to sketch with dry media. Copyists working with wet media may obtain a free permit at the Visitor Services Desk. Sketching and copying are not permitted of temporary exhibitions, works on loan, works by living artists, or works created after 1978.



October Pictorial - Churches - informal

Slides - Accomplished

- 1 Jennings, Miriam Old First Church
- 2 Shadix, Carl Church In the Valley
- 3 Jennings, Maurice Church In Holland, MI
- 4 Deering, John The Trinity

PDI - Tyro

- 1 Adkins, Julie Reaching For Heaven

PDI - Accomplished

- 1 Kempf, Becky St. Mary's Cathedral
- 2 Flowers, Trudy Good Shepherd Church At Lake Tekapo
- 3 Kubler, John Draped In Spanish Moss
- 4 Steele, Keith Basilica Of the Assumption
- 5 Carpenter, Jerry Palm Sunday
- 6 Ihrig, Bob Cathedral Hallway
- 7 Everman, Wilda The Basilica

Prints - Tyro

- 1 Reeme, Pete A New York Church
- 2 Mullins, John Little Church, Big Promise
- 3 Kaiser, Tammy Autumn's Window

Prints - Accomplished

- 1 Geiger, Ken Church Of St. Pete
- 1 Schafer, Lane Nature's Wrath
- 3 Deering, Ann Little Church In TN
- 4 McBreen, Jane Mother Of God
- 5 Kraus, Mark Inside Out
- 6 Loughry, Donna Radiant Inspiration

October Nature - Open - informal

Slides - Tyro

- 1 Conrad, Steve Snow On the Cliff

Slides - Accomplished

- 1 Jennings, Maurice Wet Morning
- 2 Jennings, Miriam Creek In the Smokies
- 3 Walter, Garry My Little Red Shrimp
- 4 Voelker, Dale Bryce Canyon Hoodoos

PDI - Accomplished

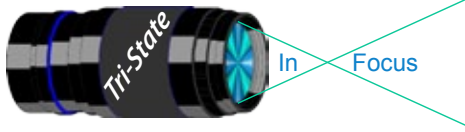
- 1 Kempf, Becky Thistle And Company
- 2 Carpenter, Jerry Elegant Egret
- 3 Ihrig, Bob Hungry Caterpillar
- 4 Everman, Wilda Mushroom By the Sea
- 5 Loughry, Donna Edge Of the Hot Pool

Prints - Tyro

- 1 Reeme, Pete Tetons
- 2 Adkins, Julie Just a Little Different

Prints - Accomplished

- 1 Kraus, Mark October Red-Bellied
- 2 Kubler, John Cooling Off
- 3 Beers, Nancy Lake Leary
- 4 McBreen, Jane My Time Of the Year
- 5 Geiger, Ken Where Did You Come From?
- 6 Steele, Keith Dawn Patrol



**Please note meeting dates may change  
due to conflicts at the Center:**

**November Meeting Dates:**

Friday, November 04, 2011 - Pictorial - 1st Friday

Friday November 18, 2011 - Nature - 3rd Friday

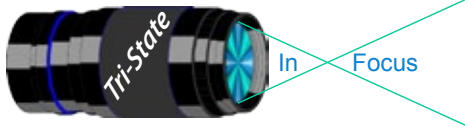
**December Meeting Dates:**

Friday December 02, 2011 - Pictorial - 1st Friday

Friday December 16, 2011 - Nature - 3rd Friday

*Editor's Note:*

*Deadline for the Next Issue is  
Monday November 28, 2011.*



## TRISTATE PHOTOGRAPHIC SOCIETY COMPETITION CATEGORIES - 2011

<u>Pictorial (1st meeting)</u>	<u>Month</u>	<u>Nature (2nd meeting)</u>
Open - Slides/Informal Prints/PDI	January	Black & White - Slides/Informal Prints/PDI
Pets - Slides/Informal Prints/PDI	February	Open - Slides/Informal Prints/PDI
Open - <i>Formal</i> Slides/Prints/PDI	March	Rows Of Things - Slides/Informal Prints/PDI
Through The Window - Slides/Informal Prints/PDI	April	Seeds/Seed Pods - Slides/Informal Prints/PDI
Open - Slides/Informal Prints/PDI	May	Open - <i>Formal</i> Slides/Prints/PDI
Fountains - Slides/Informal Prints/PDI	June	Open - Slides/Informal Prints/PDI
Open - <i>Formal</i> Slides/Prints/PDI	July	Weather - Slides/Informal Prints/PDI
Antiques - Slides/Informal Prints/PDI	August	Lakes/Streams/Rivers - Slides/Informal Prints/PDI
Open - Slides/Informal Prints/PDI	September	Open - <i>Formal</i> Slides/Prints/PDI
Churches - Slides/Informal Prints/PDI	October	Open - Slides/Informal Prints/PDI
Open - <i>Formal</i> Slides/Prints/PDI	November	Sunrise/Sunset - Slides/Informal Prints/PDI
Candle Light - Slides/Informal Prints/PDI	December	Open - Slides/Informal Prints/PDI

*Reminder:*

*Limit 1 print for Competitions.*

*Additional print(s) will be for  
Display and Discussion.*

*A Formal print is Matted only -  
no Frames.*

### For PDI (Projected Digital Image)

If you would like to participate in the **Projected Digital Images** competitions you can email them to Jerry at [jafritsch01@yahoo.com](mailto:jafritsch01@yahoo.com) up through the Thursday before each Friday meeting. They should be JPEG format (.JPG file type) with the longest side having 750 pixels or less.

You can re-size the images in your digital processing software, usually under Image, then Image Size. Change the scale to pixels (not inches or cm),

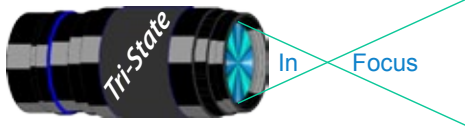
and modify the longest side (height or width) to 750. The other dimension should automatically adjust.

If you don't know how to adjust the size, or can't, feel free to email the image to Jerry. He will adjust the size. For best color results, your JPEG image should also use a sRGB color profile.

Please include your name, the image title, and if you are competing in Tyro or Advanced categories in the e-mail.

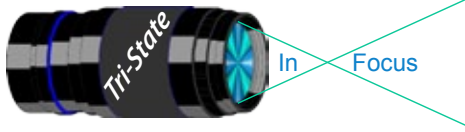
The file used to Calibrate the Projector for PDI images is located on our website at <http://www.tristatephoto-graphicsociety.com/Documents/TristateProjector.jpg> Once the image is open, right click on the image and choose "save image as" to save to the directory/folder where you want to keep the image.





## TRISTATE PHOTOGRAPHIC SOCIETY COMPETITION CATEGORIES - 2012

<u>Pictorial (1st meeting)</u>	<u>Month</u>	<u>Nature (2nd meeting)</u>
<b>Open - Slides/Informal Prints/PDI</b>	January	<b>Simplicity, Less Is More -</b> Slides/Informal Prints/PDI
<b>Anything Wood -</b> Slides/Informal Prints/PDI	February	<b>Open - Slides/Informal Prints/PDI</b>
<b>Open - Formal</b> Slides/Prints/PDI	March	<b>Power Of Three -</b> Slides/Informal Prints/PDI
<b>Tombstones -</b> Slides/Informal Prints/PDI	April	<b>Spring -</b> Slides/Informal Prints/PDI
<b>Open -</b> Slides/Informal Prints/PDI	May	<b>Open - Formal</b> Slides/Prints/PDI
<b>Tools -</b> Slides/Informal Prints/PDI	June	<b>Open -</b> Slides/Informal Prints/PDI
<b>Open - Formal</b> Slides/Prints/PDI	July	<b>Blooms -</b> Slides/Informal Prints/PDI
<b>Hunting/Fishing/Outdoor -</b> Slides/Informal Prints/PDI	August	<b>Insects -</b> Slides/Informal Prints/PDI
<b>Open -</b> Slides/Informal Prints/PDI	September	<b>Open - Formal</b> Slides/Prints/PDI
<b>Photojournalism -</b> Slides/Informal Prints/PDI	October	<b>Open -</b> Slides/Informal Prints/PDI
<b>Open - Formal</b> Slides/Prints/PDI	November	<b>Landscapes -</b> Slides/Informal Prints/PDI
<b>Hands -</b> Slides/Informal Prints/PDI	December	<b>Open -</b> Slides/Informal Prints/PDI



---

## Refreshments

November - Jerry Carpenter, Don Wiedeman, and Dale Voelker

December - Everyone

---

### E-mail Address Change Reminder.

If you change your e-mail address there are lots of people to notify, and it is easy to forget someone who needs to know your new address.

Remember to let Bob Ihrig ( [rdihrig@fuse.net](mailto:rdihrig@fuse.net) ) know of any address change so he can update this on the ListServ. Please put "Tri-State" in the subject box.

---

---

## 2011 Tri-State Officers & Chairpersons

### President

Leadership Team

Bob Ihrig, Jerry Carpenter, John Kubler, Julie Adkins, Trudy Flowers

### Vice-President

Trudy Flowers

### Secretary

Becky Kempf

### Treasurer

Julie Adkins

### Website

Donna Loughry

### Banquet/Refreshments

Wilda Everman

### Equipment

Dale Voelker

### Location & Setup

Bob Ihrig

### List-Serve News Group Manager

Bob Ihrig

### Exhibits/Publicity

Richard Jones

### Field Trips

Nancy Beers

### Mentor Series

Mark Kahes

### Membership

Jerry Carpenter

### Nature Slide Chair

Jerry Fritsch

Mark Kraus

### Pictorial Slide Chairs

Joy Sallee

Dale Voelker

### Digital Print Pictorial Chairs

Miriam & Maurice Jennings

Jane McBreen

### Digital Print Nature Chairs

Bob Ebersole

Dan Thompson

### PDI Chair

Jerry Fritsch

Harvey Flowers

Harvey Flowers

Harvey Flowers

### Newsletter

Donna Loughry

Margaret Jones

### Programs

Jeff Snyder

### PSA

Don Weideman