



**Outer Banks
In Calmer
Times by
Donna
Loughry.
Scanned 35
mm print
negative.**



The Best Laid Plans and Irene

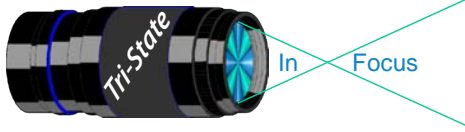
Well, my best laid plans have gone awry! I have/had planned a trip, in rather great detail, up into New England for the Fall Colors. I do find planning these trips a great deal of fun. Researching, reading and setting up places to go, things to photograph and places to stay that have fantastic views.

We are going to Boston for some family business. Then we have/had planned to drive north from Boston up into New Hampshire, Vermont and the Adirondacks in New York

to Lake Placid to see the New England Fall Colors. Some of the places we were going to see was the Kancamagus Highway, and Crawford Notch in New Hampshire as well as Ausable Chasm, High Falls Gorge, and other falls along Route 86 through Jay & Ausable Forks in New York.

Well, thanks to Hurricane Irene, that's all changed! Let's see where we stand as of this writing. The Kancamagus Highway is closed due to washed out roads & bridges.





The Crawford Notch from the south is closed also due to washed out roads & bridges. Good News? The Cog Railroad out of Bretton Woods up to Mt Washington is open and running and so is Interstate 93. Yay!

In Eastern New York, the Ausable River through Ausable Chasm was 70 feet *over* flood stage. (*Can you imagine the Ohio River at 70 feet over flood stage?*) The lower trail nearest the river down inside the gorge is pretty much destroyed and will not be reopened for the season according to their website. But the upper rim trail is open. Float trips are also not available as the river is still too high and fast with an “odd current.”

On Route 86, High Falls Gorge’s buildings have had severe damage and may not be open. Route 86 runs along the North Fork of the Ausable River. In addition to High Falls Gorge, there are several other falls along this road. However, the report that I saw yesterday was that Route 86 has had roads and bridges wiped out. Therefore, it is either closed or limited to local traffic.

Route 73 runs along the South Fork of the Ausable River. There are also lots of falls along this road. However, in this same report,

they also have had washed out roads and bridges. The closure of these two roads closes access to Lake Placid from the east.

Add to this the dam on the lake at Saranac Lake, up river, had to open it’s flood gates or have the dam destroyed. Result – more water added to the Ausable River.

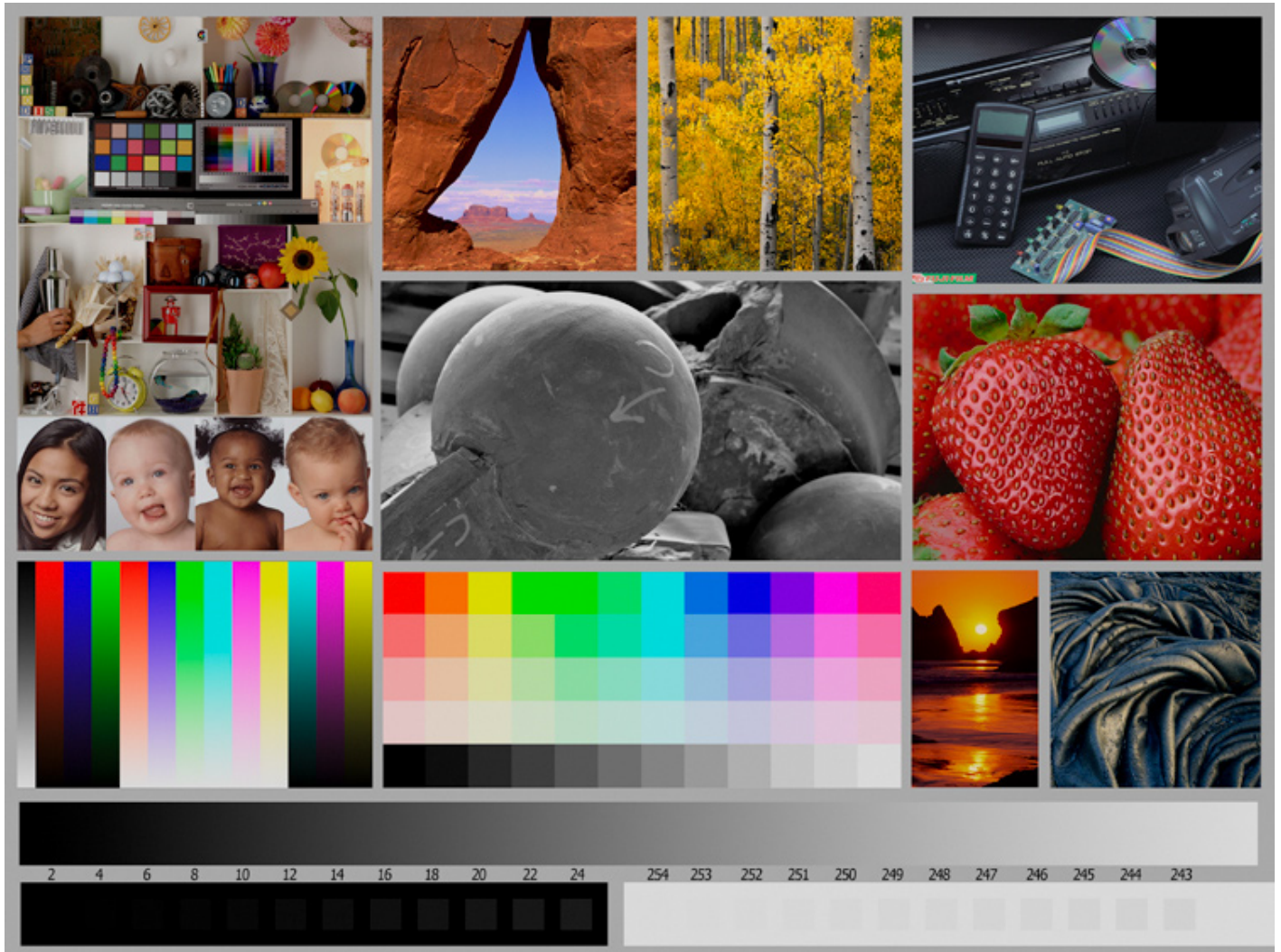
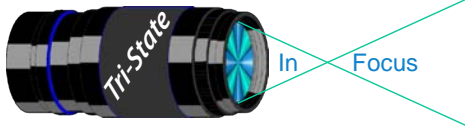
The Ausable River carries all of this water through the Ausable Chasm into Lake Champlain. The Ausable Chasm is about 20 feet wide at it’s narrowest point and about 100 feet deep to normal water levels. From damage shots on the website, the water was at or near the top of the Gorge. That’s a huge amount of water!

For now we are still planning to go. However, our plans for this part of our trip are up in the air. If and how we will get to Lake Placid will depend the conditions of the roads and bridges closer to our trip.

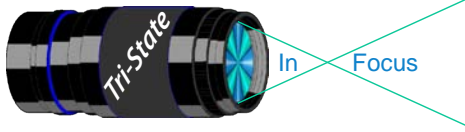
(If your name is Irene or know someone with the name Irene, I mean no disrespect to any person named Irene.)

Thanks Irene! Good Riddance!

Donna



This is the image used to calibrate the Projector for PDI images. *(Note - do not use this image in the newsletter as it has been enlarged and therefore degraded.)* The file of this image is located on our website at <http://www.tristatephotographicsociety.com/Documents/TristateProjector.jpg> Once the image is open, right click on the image and choose "save image as" to save to the directory/folder where you want to keep the image. For any other questions, see Jerry Fritsch.



Photographic Opportunities for the 2011

There are always lots of events going on in the Tri-State area. Many of these events can be excellent opportunities for photography.

Once again I will be looking up future events for the year 2011 for posting in this newsletter and on the website. If you know of additional events for 2011, please let me know so I can list them.

Nature Photographers -

If you know of specific or general times and places to photograph migratory wildlife/birds etc. please share the specifics and I will post them here.

Please e-mail the information to dloughry@fuse.net.

Donna

Krohn Conservatory

(note may be closed on Mondays)

Bonsai Exhibit - (Oct. 9 & 10)

Orchid Exhibit - (Oct. 23 & 24)

Holiday Show in December

www.cincyparks.com/krohn-conservatory/index.shtml

Cincinnati ZOO

PNC Festival of Lights

Nov 25, 2010-Jan 1, 2012.

www.cincinnati-zoo.org

Newport Aquarium

www.newportaquarium.com

Mainstrasse Village Festivals

Village Antique Show (April-October)

Oktoberfest – October

www.mainstrasse.org for specific dates and details.

Coney Island \$\$

www.coneyislandpark.com/print_calendar.php

Cruise-A-Palooza

Classic Car Show

September 3, 2011

Cincinnati Art Museum

Open Tuesday through Sunday, 11 a.m. to 5 p.m.

Closed Mondays, Thanksgiving, Christmas, New Year's Eve, New Year's Day, Martin Luther King Jr. Day, Presidents Day, Memorial Day, Fourth of July, and Labor Day.

www.cincinnatiartmuseum.org

From their website:

Photography

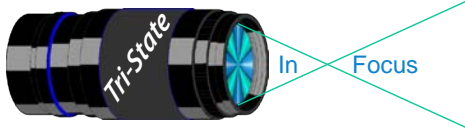
You are welcome to photograph and videotape in the permanent collection galleries, but lights or tripods are not permitted. Photography of temporary exhibitions, works on loan, works created after 1978, or works by living artists is not permitted.

Sketching and Copying

You are welcome to sketch with dry media. Copyists working with wet media may obtain a free permit at the Visitor Services Desk. Sketching and copying are not permitted of temporary exhibitions, works on loan, works by living artists, or works created after 1978.

Balluminaria at Eden Park

An Annual event usually held in November at Eden Park



August Pictorial -
Open - Formal

Slides - Accomplished

- 1 Jennings, Maurice Unlocked
- 2 Jennings, Miriam Door Hardware
- 3 Shadix, Carl Antique Steam Tractor

PDI - Tyro

- 1 Kempf, Robbie A Tired Relic
- 2 Tubesing, Dave Chapel In the Shadow Of GOD

PDI - Accomplished

- 1 Everman, Wilda Antique Cherry Stoner
- 2 Kubler, John 1935 Dodge
- 3 Flowers, Trudy Stutz USA
- 4 Kempf, Becky 1941 Pontiac
- 5 Carpenter, Jerry Grandma's First Typewriter
- 6 Loughry, Donna Antique Wash Stand
- 7 Charette, Nelson Old Car Roll the Dice

Prints - Accomplished

- 1 McBreen, Jane Up Or Down
- 2 Ihrig, Bob Shaker Chair
- 3 Beers, Nancy Shaker Seed Boxes
- 4 Jones, Margaret Antique Bike & Rider
- 4 Voelker, Dale Pocket Watch & Cuff Links
- 6 Deering, John Once Upon a Time, Someone's
New Camera
- 7 Jones, Richard Antique Carousel Horse

August Nature -
Weather - informal

Slides - Accomplished

- 1 Jones, Richard Colorado River
- 2 Jennings, Maurice Smokey Mountain Stream
- 3 Jennings, Miriam Roaring Fork
- 4 Jones, Margaret Clear Creek
- 5 Shadix, Carl Shiney Brook

PDI - Tyro

- 1 Elkins, Ron Great Miami River
- 2 Robinson, Keith Fallsville Falls
- 3 Tubesing, Dave Macinaw

PDI - Accomplished

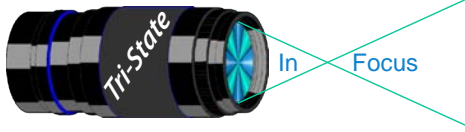
- 1 Kubler, John Early Dawn At the Yellowstone
River
- 1 Everman, Wilda Tennessee Stream
- 3 Carpenter, Jerry Yellowstone Geyser Stream
- 4 Loughry, Donna Lower Falls Of the Yellowstone
River
- 5 Flowers, Trudy Cades Cove Stream
- 6 Kempf, Becky Smokey Mountain Stream
- 7 Charette, Nelson Tremont River, Smokies

Prints - Tyro

- 1 Sallee, Ramona Tide Coming In Or Out?
- 2 Reeme, Pete Seneca Creek
- 3 Denman, Ted Silver Run Falls

Prints - Accomplished

- 1 Ihrig, Bob Big Thompson
- 2 McBreen, Jane Just Relaxing
- 3 Beers, Nancy Rocky River Bed
- 4 Wiedeman, Don Athabasca River
- 5 Kraus, Mark Eastfork



**Please note meeting dates may change
due to conflicts at the Center:**

September Meeting Dates:

Friday, Sept. 2, 2011 - Pictorial - 1st Friday

Friday Sept. 16, 2011 - Nature - 3rd Friday

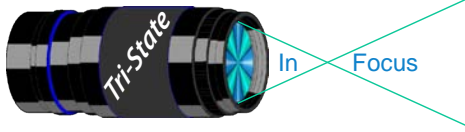
October Meeting Dates:

Friday October 07, 2011 - Pictorial - 1st Friday

Friday October 21, 2011 - Nature - 3rd Friday

Editor's Note:

Deadline for the Next Issue is October 7, 2011.



TRISTATE PHOTOGRAPHIC SOCIETY COMPETITION CATEGORIES - 2011

<u>Pictorial (1st meeting)</u>	<u>Month</u>	<u>Nature (2nd meeting)</u>
Open - Slides/Informal Prints/PDI	January	Black & White - Slides/Informal Prints/PDI
Pets - Slides/Informal Prints/PDI	February	Open - Slides/Informal Prints/PDI
Open - <i>Formal</i> Slides/Prints/PDI	March	Rows Of Things - Slides/Informal Prints/PDI
Through The Window - Slides/Informal Prints/PDI	April	Seeds/Seed Pods - Slides/Informal Prints/PDI
Open - Slides/Informal Prints/PDI	May	Open - <i>Formal</i> Slides/Prints/PDI
Fountains - Slides/Informal Prints/PDI	June	Open - Slides/Informal Prints/PDI
Open - <i>Formal</i> Slides/Prints/PDI	July	Weather - Slides/Informal Prints/PDI
Antiques - Slides/Informal Prints/PDI	August	Lakes/Streams/Rivers - Slides/Informal Prints/PDI
Open - Slides/Informal Prints/PDI	September	Open - <i>Formal</i> Slides/Prints/PDI
Churches - Slides/Informal Prints/PDI	October	Open - Slides/Informal Prints/PDI
Open - <i>Formal</i> Slides/Prints/PDI	November	Sunrise/Sunset - Slides/Informal Prints/PDI
Candle Light - Slides/Informal Prints/PDI	December	Open - Slides/Informal Prints/PDI

Reminder:

Limit 1 print for Competitions.

*Additional print(s) will be for
Display and Discussion.*

*A Formal print is Matted only -
no Frames.*

For PDI (Projected Digital Image)

If you would like to participate in the **Projected Digital Images** competitions you can email them to Jerry at jafritsch01@yahoo.com up through the Thursday before each Friday meeting. They should be JPEG format (.JPG file type) with the longest side having 750 pixels or less.

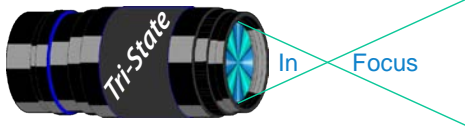
You can re-size the images in your digital processing software, usually under Image, then Image Size. Change the scale to pixels (not inches or cm),

and modify the longest side (height or width) to 750. The other dimension should automatically adjust.

If you don't know how to adjust the size, or can't, feel free to email the image to Jerry. He will adjust the size. For best color results, your JPEG image should also use a sRGB color profile.

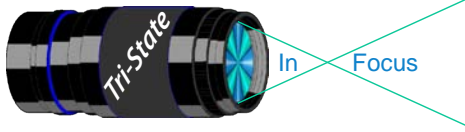
Please include your name, the image title, and if you are competing in Tyro or Advanced categories in the e-mail.

The file used to Calibrate the Projector for PDI images is located on our website at <http://www.tristatephoto-graphicsociety.com/Documents/TristateProjector.jpg> Once the image is open, right click on the image and choose "save image as" to save to the directory/folder where you want to keep the image.



TRISTATE PHOTOGRAPHIC SOCIETY COMPETITION CATEGORIES - 2012

<u>Pictorial (1st meeting)</u>	<u>Month</u>	<u>Nature (2nd meeting)</u>
Open - Slides/Informal Prints/PDI	January	Simplicity, Less Is More - Slides/Informal Prints/PDI
Anything Wood - Slides/Informal Prints/PDI	February	Open - Slides/Informal Prints/PDI
Open - Formal Slides/Prints/PDI	March	Power Of Three - Slides/Informal Prints/PDI
Tombstones - Slides/Informal Prints/PDI	April	Spring - Slides/Informal Prints/PDI
Open - Slides/Informal Prints/PDI	May	Open - Formal Slides/Prints/PDI
Tools - Slides/Informal Prints/PDI	June	Open - Slides/Informal Prints/PDI
Open - Formal Slides/Prints/PDI	July	Blooms - Slides/Informal Prints/PDI
Hunting/Fishing/Outdoor - Slides/Informal Prints/PDI	August	Insects - Slides/Informal Prints/PDI
Open - Slides/Informal Prints/PDI	September	Open - Formal Slides/Prints/PDI
Photojournalism - Slides/Informal Prints/PDI	October	Open - Slides/Informal Prints/PDI
Open - Formal Slides/Prints/PDI	November	Landscapes - Slides/Informal Prints/PDI
Hands - Slides/Informal Prints/PDI	December	Open - Slides/Informal Prints/PDI



Refreshments

September - Jeff Snyder, John Mullins, and ???

October - Chris Lusk, Israel Lichtenstein, and ???

November - Jerry Carpenter, Don Wiedeman, and Dale Voelker

December - Everyone

E-mail Address Change Reminder.

If you change your e-mail address there are lots of people to notify, and it is easy to forget someone who needs to know your new address.

Remember to let Bob Ihrig (rdihrig@fuse.net) know of any address change so he can update this on the ListServ. Please put "Tri-State" in the subject box.

2011 Tri-State Officers & Chairpersons

President

Leadership Team

Bob Ihrig, Jerry Carpenter, John Kubler, Julie Adkins, Trudy Flowers

Vice-President

Trudy Flowers

Secretary

Becky Kempf

Treasurer

Julie Adkins

Website

Donna Loughry

Banquet/Refreshments

Wilda Everman

Equipment

Dale Voelker

Location & Setup

Bob Ihrig

List-Serve News Group Manager

Bob Ihrig

Exhibits/Publicity

Richard Jones

Field Trips

Nancy Beers

Mentor Series

Mark Kahes

Membership

Jerry Carpenter

Nature Slide Chair

Jerry Fritsch

Mark Kraus

Pictorial Slide Chairs

Joy Sallee

Dale Voelker

Digital Print Pictorial Chairs

Miriam & Maurice Jennings

Jane McBreen

Digital Print Nature Chairs

Bob Ebersole

Dan Thompson

PDI Chair

Jerry Fritsch

Harvey Flowers

PDI Equipment

Harvey Flowers

Newsletter

Donna Loughry

Points/Awards

Margaret Jones

Programs

Jeff Snyder

PSA

Don Weideman